



2024

# CAPABILITY STATEMENT

---


L & J Industries Pty Ltd, a premier privately owned company based in Queensland, has been driving excellence in the construction, mining, and quarrying sectors for over seven years. We pride ourselves on delivering top-tier work and exceptional value, ensuring every project is executed to the highest standards.





# TABLE CONTENT

---

- About Us
  - Our Mission
  - Our Commitment
  - Our Values
  - The Team
  - Our Services
  - Our Projects
  - Testimonials
  - Our Clients
- 



# ABOUT US

---

L & J Industries Pty Ltd, a premier privately owned company based in Queensland, has been driving excellence in the construction, mining, and quarrying sectors for over seven years. We pride ourselves on delivering top-tier work and exceptional value, ensuring every project is executed to the highest standards.

With a reputation for quality and reliability, our team leverages advanced equipment and specialised expertise to tackle the most complex projects. Our comprehensive approach means that whether it's intricate underground utility installations, precise vegetation management, or large-scale mining operations, we have the skills and resources to deliver outstanding results.

We are committed to maintaining the highest safety standards, continuously innovating our processes, and fostering collaboration with remote Indigenous communities. This dedication not only ensures the successful completion of projects but also promotes positive, sustainable impacts in the regions we serve.

Our focus on excellence, efficiency, and professionalism has earned us the trust of our clients, making L & J Industries a preferred partner for a wide range of challenging projects. When you choose L & J Industries, you are choosing a company that is dedicated to delivering unparalleled expertise and exceptional service every step of the way.





## OUR MISSION

Our mission at L & J Industries Pty Ltd is to deliver safe, sustainable, and high-quality projects and services that consistently uphold our core values of excellence, integrity, and innovation. We are committed to creating value for our clients through rigorous quality control, innovative solutions, and ethical business practices. By integrating eco-friendly materials and energy-efficient technologies, we aim to minimise our environmental impact. Additionally, we prioritise the safety of our employees, clients, and the public by adhering to strict safety protocols. Through active community engagement and support for local initiatives, we strive to make a positive impact on the communities we serve.

## INTEGRITY

We conduct our business with integrity, honesty, and transparency. Our ethical approach ensures that we build trust with our clients, partners, and stakeholders. We are committed to doing what is right, consistently delivering on our promises, and maintaining the highest level of ethical standards.

## OUR COMMITMENT

At L & J Industries Pty Ltd, our mission is to deliver safe, sustainable, and high-quality projects and services that uphold our core values of excellence, integrity, and innovation. We are committed to creating value for our clients and making a positive impact on the communities we serve.



# OUR VALUES

## HIGH-QUALITY STANDARDS:

Quality is at the core of everything we do. We strive for excellence in every project and service, ensuring that our work meets or exceeds industry standards. Our rigorous quality control processes and attention to detail guarantee that our clients receive the best possible outcomes.



## SAFETY FIRST:

Safety is our top priority in every project and service we undertake. We ensure strict adherence to safety protocols and standards, creating a secure environment for our employees, clients, and the public. Our comprehensive safety programmes are designed to prevent accidents and promote a culture of safety awareness throughout our organisation.

## INNOVATION:

Innovation drives our growth and success. We embrace new technologies, methodologies, and ideas to stay at the forefront of the industry. Our investment in research and development allows us to offer cutting-edge solutions that address the evolving needs of our clients and contribute to the advancement of the industry.



## SUSTAINABILITY:

We are dedicated to implementing sustainable practices in all aspects of our operations. By integrating eco-friendly materials, energy-efficient technologies, and waste reduction strategies, we aim to minimise our environmental impact. Our commitment to sustainability drives us to continually seek innovative solutions that benefit both our business and the planet.

# MEET THE TEAM

---

We value our people, encourage their development, and reward their performance. At L & J Industries, we recognise that our people are our number one asset and that our company is only as strong as the people we have on our team. We promote a work culture that is safe, productive, and enjoyable.



## **Liam Pickering**

---

Director

P: 0427 969 323

E: [liam@ljindustries.com.au](mailto:liam@ljindustries.com.au)



## **Meredith Tainton**

---

General Manager

P: 0497 000 927

E: [mez@ljindustries.com.au](mailto:mez@ljindustries.com.au)



## **James MacDonnell**

---

L&J Tree Services Supervisor

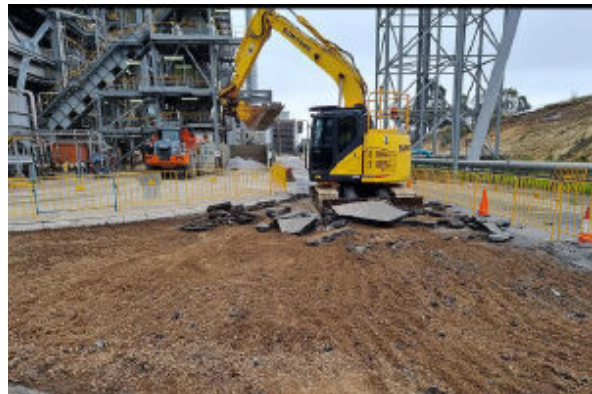
P: 0428 927 593

E: [james@ljindustries.com.au](mailto:james@ljindustries.com.au)

# OUR SERVICES

L & J Industries Pty Ltd is a privately owned, Queensland-based company that has been operating for more than seven years. The L & J Industries team prides itself on quality work, offering value for money through their expertise to get the job done efficiently and effectively.

Our comprehensive services and equipment are fully adaptable to the needs of the most diverse projects, ensuring that we can meet the unique requirements of each client with precision and reliability. We also offer Dry Hire and Provision of Expert Workforce, offering flexible solutions tailored to meet the specific needs of our clients.





## CIVIL CONSTRUCTION

Utilising a range of equipment such as excavators, loaders, rollers, dozers, graders, bobcats, backhoes, EWP's, tip trucks, water carts, vac trucks, and other multi-combination vehicles.

## SPECIALISED WORKS

Expertise in confined spaces, asbestos removal (non-friable removal and supervision with Class B licence), installation and maintenance of underground utility pipes, traffic management, applied risk management, and working at heights.

## VACUUM EXCAVATION

Services for service location, non-destructive trenching, pit dewatering, and spillage containment (Certified RIICCM202D Identify, Locate and Protect Underground Services).

## CULTURAL HERITAGE EXPERTISE

Working with remote Indigenous communities across the Northern Territory and Queensland.

## VEGETATION MANAGEMENT AND TREE CARE SERVICES

Services include land clearing, tree removal, storm work, arbor reports, stump grinding and removal, with level three certified arborists qualified to work around HV powerlines.

## ANCILLARY MINING SERVICES

Including crushing and screening, stockpiling, and loading material for delivery.



# OUR PROJECTS

---

**L & J Industries has worked all over Australia including Queensland, the Northern Territory, South Australia and Western Australia.**

Director Liam Pickering's career in civil works began in Western Australia, where he worked for the Argyle Diamond mine, crushing material required for the mine's internal road network. This work later expanded to include material crushing for Western Australia's iron ore mines. His experience played an integral role in Queensland's flood relief efforts in 2011 and 2013, where his team was contracted to undertake flood relief civil works in Central Queensland. They operated a crushing plant in Wandoan, providing the necessary materials for extensive road repairs. More recently, the team has provided coal crushing and screening services at Tarong Power Station for Stanwell Corporation.

This experience proved pivotal during Queensland's flood relief efforts in 2011 and 2013, where L & J Industries was contracted for civil works in Central Queensland. Operating a crushing plant in Wandoan, they provided essential materials for extensive road repairs. More recently, the team undertook coal crushing and screening at Tarong Power Station for Stanwell Corporation. In November 2020, after successful completion of major projects including the NBN in Brisbane and the Gold Coast, L & J Industries secured the Ash Haulage and Minor Civil Works contract at Tarong Power Station. This project involves collecting, hauling, and disposing of furnace ash and Tarong Power Station Ash Thickening Plant rejects, along with screening and loading these materials. Additionally, they perform minor civil works such as site rectification, excavation, road maintenance and repair, site preparation including crane pads, trenching for drain installation, vacuum extraction of coal sediment pits and pulverisers, and containment of coal handling spills.

More recently, L & J Industries prepared the site for the Southern Renewable Energy Zone BESS project at Tarong Power Station for Yurika. This included supplying machinery and labor for site amenity installation, PFAS spoil removal and containment, site grading for battery installations, service location, asbestos pit removal, supply of quarry products, and coordinating concrete delivery and pumping.

In the South Burnett region, L & J Industries has been involved in various significant projects, including demolition and site preparation for a new Hungry Jack's restaurant, civil works at St John's Lutheran School, and bulk earthworks for the Agricultural Studies project at Kingaroy State High School. They also contributed to flood recovery efforts for the South Burnett Regional Council, performing culvert and drain cleaning using vac trucks, water trucks, and excavators, and supplying machinery, labor, and quarry materials for the Wambo Wind Farm.

Since 2017, L & J Industries has conducted arboreal works for the Doomadgee Aboriginal Shire Council in North Queensland, collaborating with Indigenous landowners on tree removal for fire breaks and post-cyclone cleanup. They provide vegetation management and regular arboreal reports to the Council, along with building and gutter cleaning and maintenance services.

Similar projects have been undertaken across Queensland for various Government, commercial, and private clients, including QBuild, Tarong Power Station, and Curragh Mine in Blackwater.

In July 2020, Liam established Kingaroy Quarry Supplies (KOS) to manage a locally-owned quarry near Kingaroy. With a management team and experienced crew, production at Wattlegrove Quarry has increased steadily. KOS is now a preferred supplier to the South Burnett Regional Council and is accredited by Transport & Main Roads for type 3 roadbases. They offer a range of products including thermal sand, river sand, crusher dust, garden soil, pre-mix, hardwood chip, roadbase, and aggregates. KOS has expanded operations with a second quarry at Bell, specializing in type 2 roadbase and aggregates, and recently started contract crushing and screening projects to supply materials to regional Queensland's gas fields.

“

I have worked with the team from L & J Industries and Kingaroy Quarry Supplies for a number of years, initially at Tarong Power Station in my role as Major Maintenance Superintendent with Stanwell Corporation and more recently at the Wambo Wind Farm. Our primary contractors have engaged L & J and KOS to provide machinery and labour to assist with site earthworks, as well as quarry and sand products for the wind farm project.

I have always found the companies very responsive especially for emergency requests; provide excellent value for money; and their project personnel are highly experienced and committed.

I have no hesitation in recommending the team from L & J Industries and Kingaroy Quarry Supplies.

”

**STEVE ASHCROFT,**

CONSTRUCTION MANAGER, WAMBO WIND FARM STAGE 1



# OUR CLIENTS

## Major clients have included:

- Stanwell Corporation - Tarong Power Station, South West Queensland
- Energy Queensland Limited, South West Queensland
- Yurika - Southern Renewable Energy Zone BESS, Tarong Power Station, South West QLD
- Bridgeman Group, South West Queensland
- GFG Projects, South West Queensland
- Doomadgee Aboriginal Shire Council, North Queensland
- NBN Co, Southern Queensland
- QBuild Building & Asset Services, Queensland
- Coronado Global Resources - Curragh Coal Mine, Central Queensland
- South Burnett Regional Council, South West Queensland
- Southern Downs Regional Council, South West Queensland
- McMahon Services Australia, Queensland
- Gold Coast Building Group, Queensland
- Argyle Diamond Mine, Western Australia

“For the past 4 years, L & J Industries have been the primary provider of Civil Services and Ash Haulage at Stanwell Corporation's Tarong Power Station. During this period L & J have consistently delivered a high level of customer service and provided prompt responses to quotes and enquiries. They have provided timely works execution within agreed or approved budgets, short turnaround times on high priority work, and are responsive and adaptable to emergency work. When conducting customer feedback surveys on site, L & J have always received high regards in all facets of their work. L & J always comply with legislative requirements and site policies regarding Health Safety and Environment. They provide transparent reporting and prompt action toward site recommendation. We look forward to our continued relationship with L & J Industries into the future.”

JAIMEN TUNSTALL,  
SITE SERVICES SUPERINTENDENT, TARONG POWER STATIONS,  
STANWELL CORPORATION



# LET'S WORK TOGETHER



0427 969 323



[www.ljindustries.com.au](http://www.ljindustries.com.au)



[admin@ljindustries.com.au](mailto:admin@ljindustries.com.au)



1304 Wattlegrove Rd, Kingaroy QLD